

## Features

- UNIQUE FUNNEL HEAT SINK DESIGN
- HIGH PERFORMANCE MEANWELL DRIVER
- SAMSUNG SMD LEDS
- 90 LM/W
- 80W
- 7,200 LM
- IP65

## Application

- WALL LIGHTING
- COMMERCIAL
- INDUSTRIAL
- WORKSHOP
- FACTORY
- STORAGE

## Certificate

- ETL(5001529), DLC

## Warranty

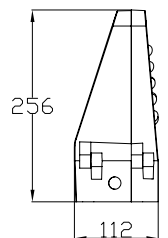
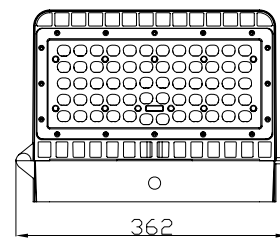
- 5 Years warranty

## Specifications

Model No.:	WP-80W
Power Consumption:	80W
Input Voltage:	100-277Vac
Operate Frequency:	50-60Hz
Lumens Output:	6400-7200lm
LED Brand:	SAMSUNG
Color Temperature:	3000K / 4000K / 5000 / 6000K
CRI:	Ra≥75
Beam Angle:	120°
IP Rated:	IP65
Power Factor:	>0.95
Total Harmonic Distortion:	<20%
Working Temp.:	-20°C ~ 50°C
Storage Temp.:	-40°C ~ 70°C
Lifespan L70(H):	>50,000 Hours
Cables:	0.3m three-core high quality silicon wire
Fixture Weight:	5.5Kg(12.1lb)



Unit: mm

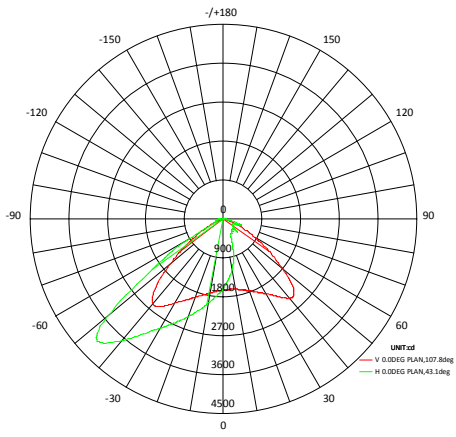


## Ordering Information

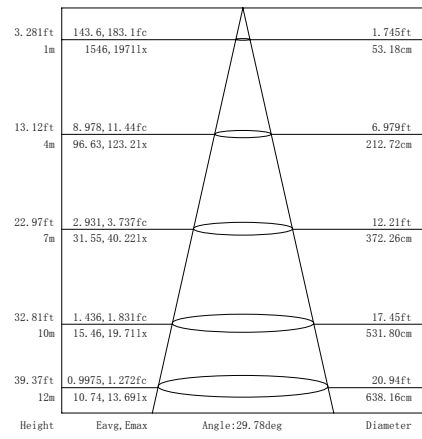
Sample: WP0380W-50K

Product	Input Voltage	CCT	Housing color	Operation
WP0380W-50K	100-277Vac(Standard)	<b>30K</b>	Brown (Standard)	Non-dimming (Standard)
		3000 kelvin		
		<b>40K</b>		
		4000 Kelvin		
		<b>50K</b>		
5000 Kelvin				
<b>60K</b>		6000 Kelvin		

## Light Distribution Curve



## Illumination Distribution



## Warranty Policy

- Standard 5 years after purchase under normal usage